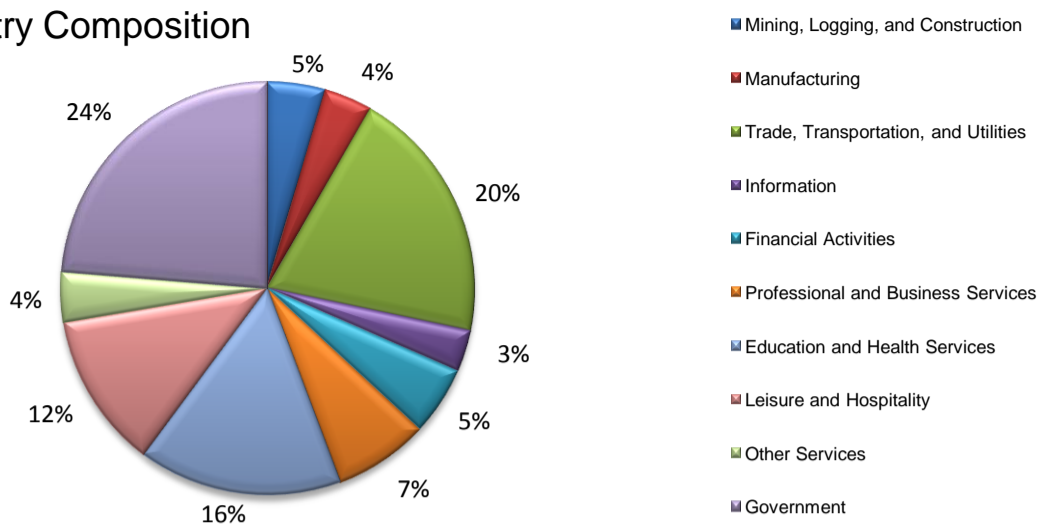
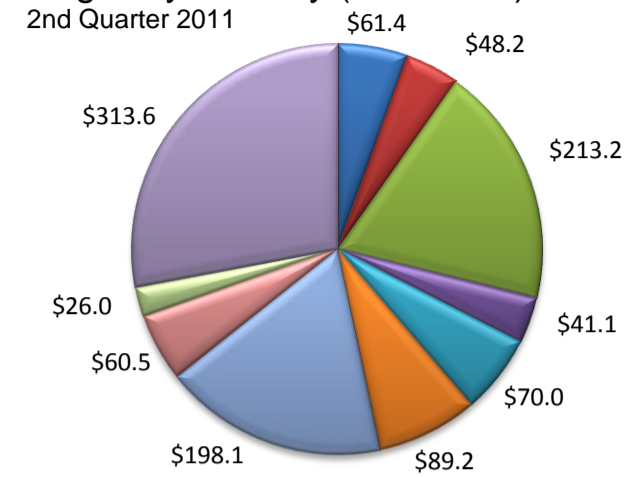


(Crosby, Lubbock)

Industry Composition



Wages by Industry (in millions)



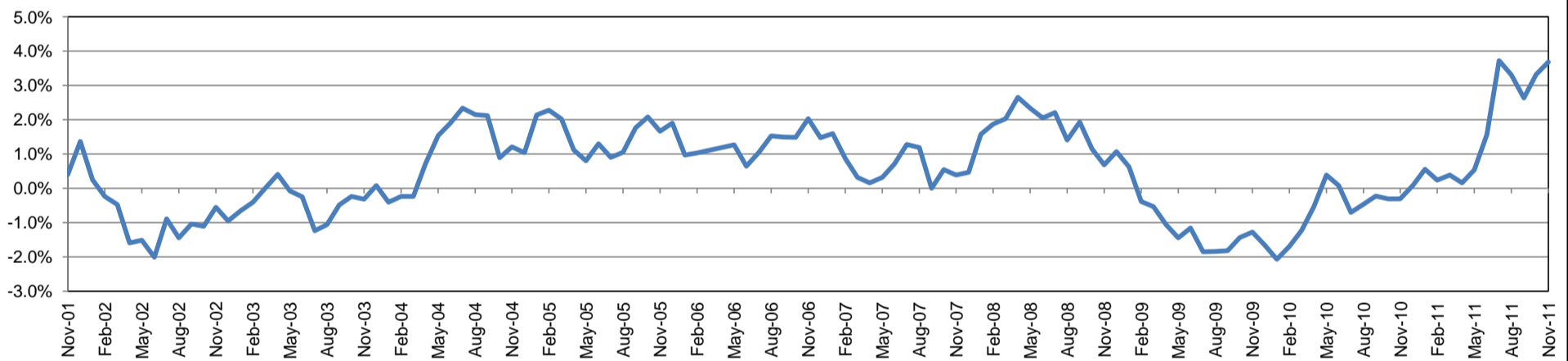
Employment by Industry

	Nov-11	Oct-11	Nov-10	Monthly Change		Annual Change	
				Actual	%	Actual	%
Total Nonfarm	135,000	133,900	130,200	1,100	0.8%	4,800	3.7%
Mining, Logging, and Construction	6,100	6,200	5,800	-100	-1.6%	300	5.2%
Manufacturing	5,100	5,100	5,000	0	0.0%	100	2.0%
Trade, Transportation, and Utilities	27,000	26,500	25,700	500	1.9%	1,300	5.1%
Information	4,400	4,200	4,400	200	4.8%	0	0.0%
Financial Activities	7,200	7,200	7,000	0	0.0%	200	2.9%
Professional and Business Services	10,000	10,000	9,400	0	0.0%	600	6.4%
Education and Health Services	21,500	21,400	20,500	100	0.5%	1,000	4.9%
Leisure and Hospitality	16,400	16,400	15,900	0	0.0%	500	3.1%
Other Services	5,300	5,300	5,200	0	0.0%	100	1.9%
Government	32,000	31,600	31,300	400	1.3%	700	2.2%

Industry Size Class

Size Class	Employees per firm	Number of Firms	June 2011		
			Employment in Size Class	% Total Employment	
9	1000+	11	29,568	23.4%	
8	500-999	8	5,875	4.6%	
7	250-499	32	11,231	8.9%	
6	100-249	139	21,089	16.7%	
5	50-99	217	14,732	11.6%	
4	20-49	627	19,086	15.1%	
3	10-19	839	11,430	9.0%	
2	5-9	1,145	7,579	6.0%	
1	1-4	2,882	5,895	4.7%	
0	0	478	0	0.0%	
Total			6,378	126,485	100.0%

Annual Growth Rate for Total Nonagricultural Employment



Unemployment Information (all estimates in thousands)

	Lubbock MSA				Texas (Actual)				United States (Actual)			
	C.L.F.	Emp.	Unemp.	Rate	C.L.F.	Emp.	Unemp.	Rate	C.L.F.	Emp.	Unemp.	Rate
Nov-11	151.7	143.3	8.4	5.5	12,344.7	11,423.8	920.9	7.5	153,683.0	141,070.0	12,613.0	8.2
Oct-11	150.6	141.5	9.1	6.0	12,367.0	11,378.4	988.6	8.0	154,088.0	140,987.0	13,102.0	8.5
Nov-10	147.0	137.8	9.2	6.2	12,212.3	11,207.1	1,005.2	8.2	153,698.0	139,415.0	14,282.0	9.3

Historical Unemployment Rates

