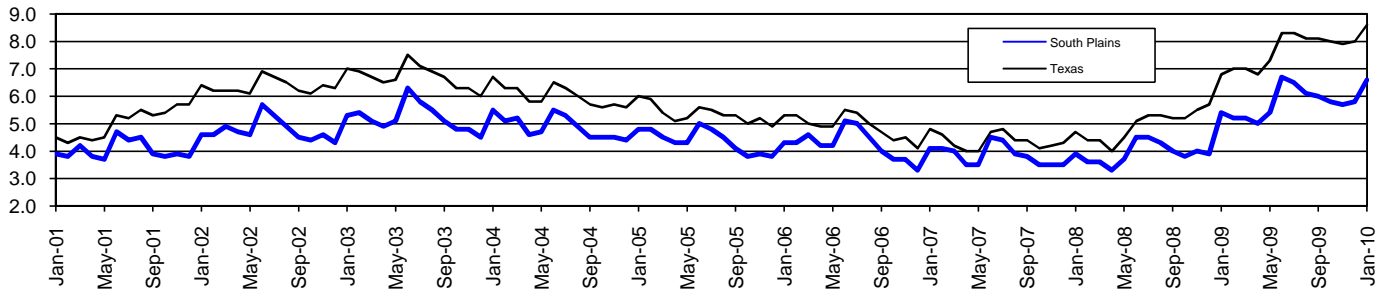


South Plains Workforce Development Area*

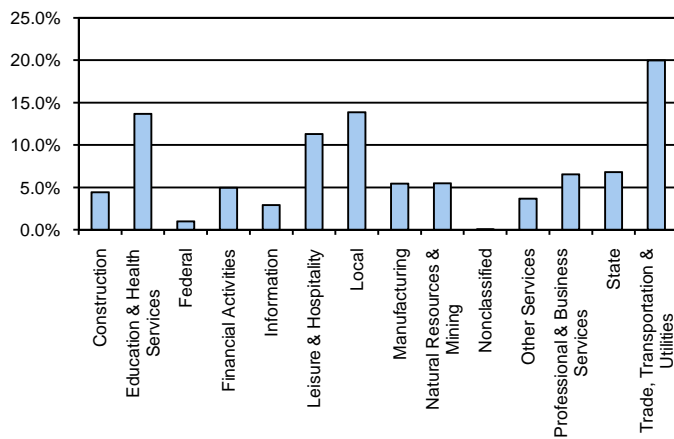
January 2010

South Plains WDA					Texas				
	CLF	Employed	Unemployed	Rate		CLF	Employed	Unemployed	Rate
Jan-10	208,579	194,891	13,688	6.6	Jan-10	12,094,136	11,049,755	1,044,381	8.6
Dec-09	207,171	195,212	11,959	5.8	Dec-09	12,027,653	11,069,879	957,774	8.0
Jan-09	203,714	192,777	10,937	5.4	Jan-09	11,738,166	10,937,524	800,642	6.8

Historical Unemployment Rates



South Plains WDA Industry Composition 3rd Quarter 2009



Total WDA Claims

	Jan-10	Dec-09	Jan-09	OTY
Initial	2,118	1,978	1,989	129
Continued	6,923	5,668	5,072	1,851
Continued Claims for the Week of the 12th				
Continued	2,028	1,815	1,832	196

Texas Unemployment Insurance Claims Filed

	Jan-10	Dec-09	Jan-09	OTY
Initial	108,752	100,826	125,284	-16,532
Continued	1,201,595	1,147,179	843,726	357,869
Continued Claims for the Week of the 12th				
Continued	254,414	266,245	202,492	51,922

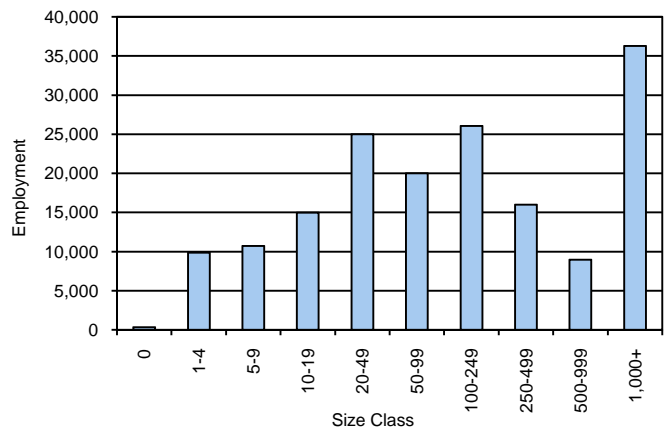
South Plains WDA Average Weekly Wage

	South Plains	WDA Qtr. Chg.	Texas
3rd Quarter 2009	\$628.88	-\$5.73	\$844.59
2nd Quarter 2009	\$634.61	WDA OTY Chg.	\$838.34
3rd Quarter 2008	\$634.91	-\$6.03	\$849.50

NAICS Covered Employment Quarterly Data 3rd Quarter 2009

SUPER SECTOR	Employment	Change	
		Quarter	Year
Construction	7,398	-34	-323
Education & Health Services	22,998	1	661
Federal	1,673	-55	17
Financial Activities	8,344	-72	-335
Information	4,864	-83	-787
Leisure & Hospitality	18,963	-186	-97
Local	23,296	-75	1,424
Manufacturing	9,127	-69	-373
Natural Resources & Mining	9,188	714	-760
Nonclassified	88	-7	-18
Other Services	6,172	101	215
Professional & Business Services	11,001	123	-1,123
State	11,420	-341	-308
Trade, Transportation & Utilities	33,619	-25	-1,092
TOTAL	168,151	-8	-2,899

Size Class Employment Composition 3rd Quarter 2009



*Counties in WDA: Bailey, Cochran, Crosby, Dickens, Floyd, Garza, Hale, Hockley, King, Lamb, Lubbock, Lynn, Motley, Terry, & Yoakum