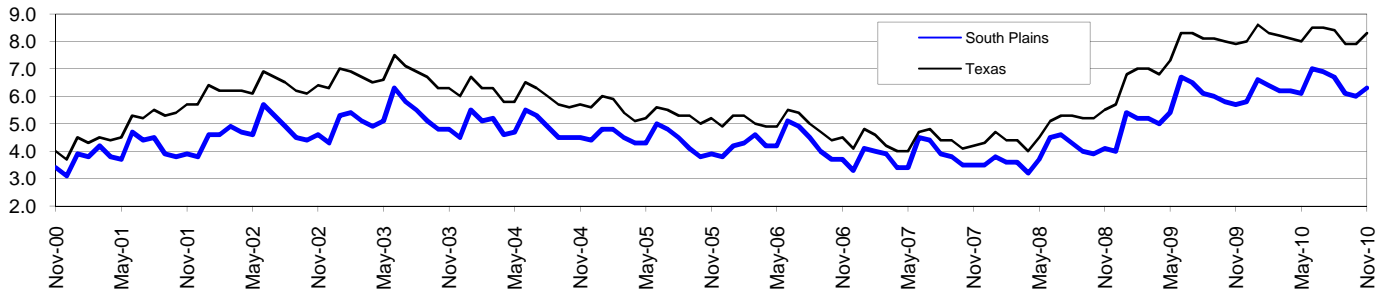


# South Plains Workforce Development Area\*

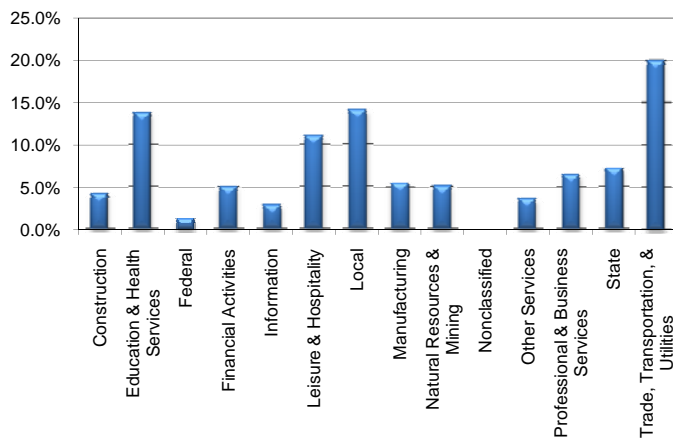
## November 2010

South Plains WDA					Texas				
	CLF	Employed	Unemployed	Rate		CLF	Employed	Unemployed	Rate
<b>Nov-10</b>	209,996	196,663	13,333	6.3	<b>Nov-10</b>	12,226,910	11,214,627	1,012,283	8.3
<b>Oct-10</b>	209,817	197,146	12,671	6.0	<b>Oct-10</b>	12,158,310	11,193,477	964,833	7.9
<b>Nov-09</b>	208,861	196,941	11,920	5.7	<b>Nov-09</b>	12,055,249	11,105,089	950,160	7.9

### Historical Unemployment Rates



### South Plains WDA Industry Composition 2nd Quarter 2010



### Total WDA Claims

	Nov-10	Oct-10	Nov-09	OTY
<b>Initial</b>	991	807	1,712	-721
<b>Continued</b>	3,880	3,551	5,259	-1,379
<b>Continued Claims for the Week of the 12th</b>				
<b>Continued</b>	1,432	1,472	1,638	-206

### Texas Unemployment Insurance Claims Filed

	Nov-10	Oct-10	Nov-09	OTY
<b>Initial</b>	85,666	87,633	98,560	-12,894
<b>Continued</b>	887,513	880,638	1,219,676	-332,163
<b>Continued Claims for the Week of the 12th</b>				
<b>Continued</b>	190,017	195,886	254,048	-64,031

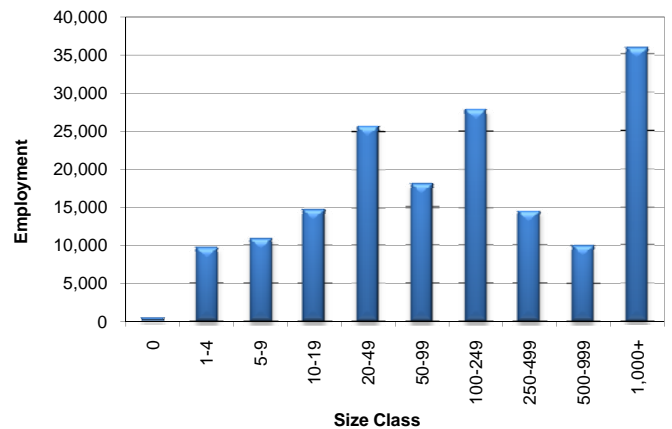
### South Plains WDA Average Weekly Wage

	South Plains	WDA Qtr. Chg.	Texas
<b>2nd Quarter 2010</b>	\$662.92	\$30.44	\$863.94
<b>1st Quarter 2010</b>	\$632.48	<b>WDA OTY Chg.</b>	\$891.60
<b>2nd Quarter 2009</b>	\$634.40	\$28.52	\$838.52

### NAICS Covered Employment Quarterly Data 2nd Quarter 2010

SUPER SECTOR	Employment	Change	
		Quarter	Year
Construction	7,101	336	-315
Education & Health Services	22,972	136	344
Federal	2,103	277	378
Financial Activities	8,332	31	-91
Information	4,672	-126	-275
Leisure & Hospitality	18,386	511	-732
Local	23,478	-224	109
Manufacturing	9,159	124	-40
Natural Resources & Mining	8,470	160	-43
Nonclassified	70	5	-9
Other Services	6,140	86	53
Professional & Business Services	10,846	307	-288
State	12,027	33	268
Trade, Transportation, & Utilities	33,408	113	-249
<b>TOTAL</b>	<b>167,164</b>	<b>1,769</b>	<b>-890</b>

### Size Class Employment Composition 2nd Quarter 2010



\*Counties in WDA: Bailey, Cochran, Crosby, Dickens, Floyd, Garza, Hale, Hockley, King, Lamb, Lubbock, Lynn, Motley, Terry, & Yoakum