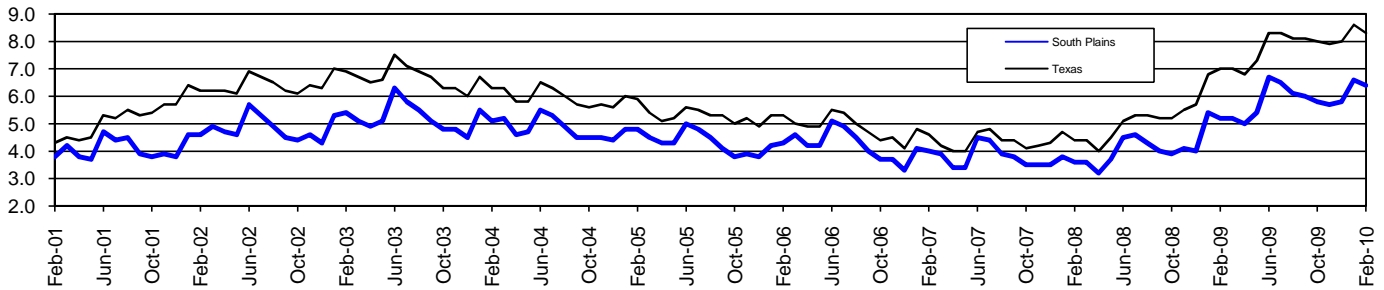


South Plains Workforce Development Area*

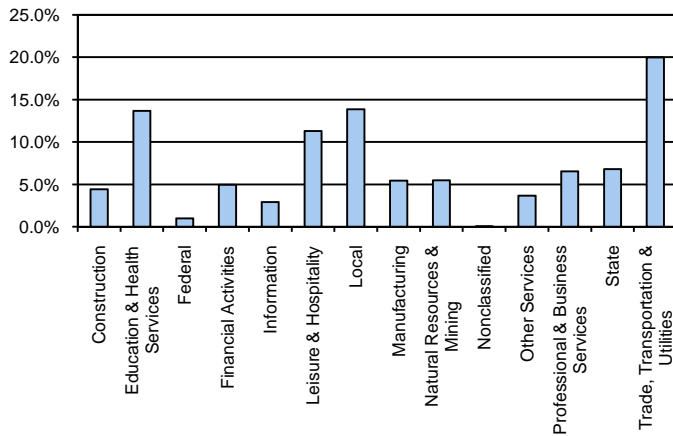
February 2010

South Plains WDA					Texas				
	CLF	Employed	Unemployed	Rate		CLF	Employed	Unemployed	Rate
Feb-10	209,009	195,545	13,464	6.4	Feb-10	12,092,981	11,085,463	1,007,518	8.3
Jan-10	208,688	194,989	13,699	6.6	Jan-10	12,094,441	11,049,722	1,044,719	8.6
Feb-09	203,544	192,874	10,670	5.2	Feb-09	11,759,999	10,939,980	820,019	7.0

Historical Unemployment Rates



South Plains WDA Industry Composition 3rd Quarter 2009



Total WDA Claims

	Feb-10	Jan-10	Feb-09	OTY
Initial	1,217	2,118	1,855	-638
Continued	5,961	6,923	4,860	1,101
Continued Claims for the Week of the 12th				
Continued	2,213	2,041	1,779	434

Texas Unemployment Insurance Claims Filed

	Feb-10	Jan-10	Feb-09	OTY
Initial	86,282	108,752	114,484	-28,202
Continued	1,020,691	1,201,595	905,168	115,523
Continued Claims for the Week of the 12th				
Continued	243,367	254,414	223,184	20,183

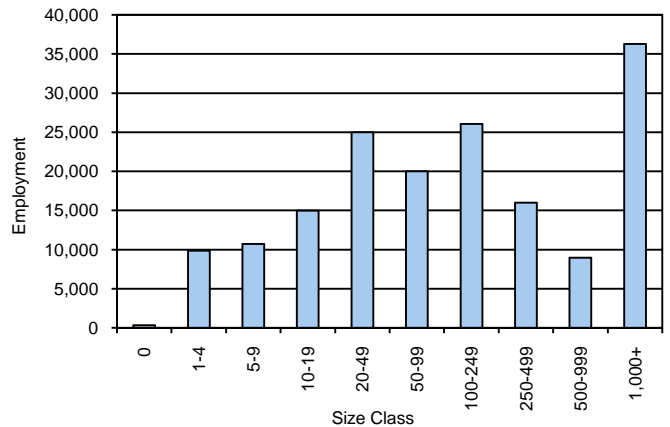
South Plains WDA Average Weekly Wage

	South Plains	WDA Qtr. Chg.	Texas
3rd Quarter 2009	\$628.88	-\$5.73	\$844.59
2nd Quarter 2009	\$634.61	WDA OTY Chg.	\$838.34
3rd Quarter 2008	\$634.91	-\$6.03	\$849.50

NAICS Covered Employment Quarterly Data 3rd Quarter 2009

SUPER SECTOR	Employment	Change	
		Quarter	Year
Construction	7,398	-34	-323
Education & Health Services	22,998	1	661
Federal	1,673	-55	17
Financial Activities	8,344	-72	-335
Information	4,864	-83	-787
Leisure & Hospitality	18,963	-186	-97
Local	23,296	-75	1,424
Manufacturing	9,127	-69	-373
Natural Resources & Mining	9,188	714	-760
Nonclassified	88	-7	-18
Other Services	6,172	101	215
Professional & Business Services	11,001	123	-1,123
State	11,420	-341	-308
Trade, Transportation & Utilities	33,619	-25	-1,092
TOTAL	168,151	-8	-2,899

Size Class Employment Composition 3rd Quarter 2009



*Counties in WDA: Bailey, Cochran, Crosby, Dickens, Floyd, Garza, Hale, Hockley, King, Lamb, Lubbock, Lynn, Motley, Terry, & Yoakum