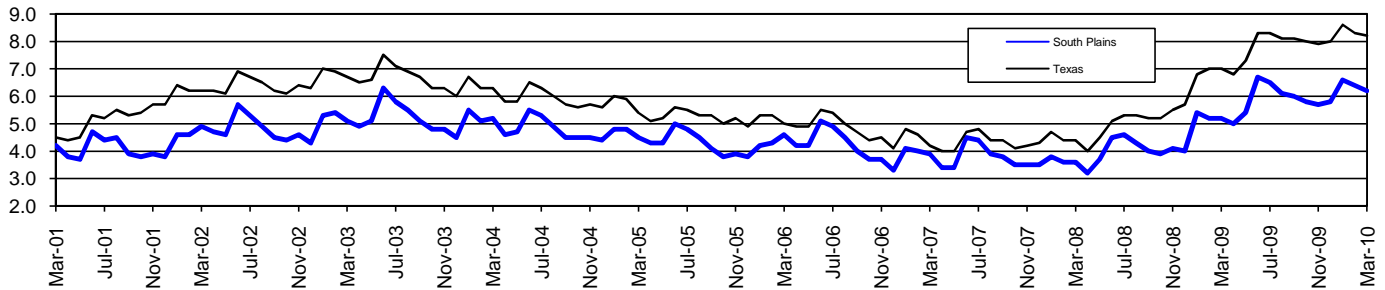


# South Plains Workforce Development Area\*

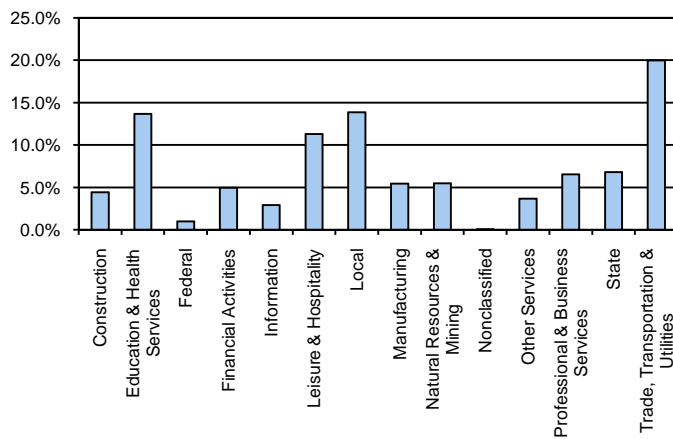
March 2010

| South Plains WDA |         |          |            |      | Texas         |            |            |            |      |
|------------------|---------|----------|------------|------|---------------|------------|------------|------------|------|
|                  | CLF     | Employed | Unemployed | Rate |               | CLF        | Employed   | Unemployed | Rate |
| <b>Mar-10</b>    | 209,195 | 196,149  | 13,046     | 6.2  | <b>Mar-10</b> | 12,123,132 | 11,127,887 | 995,245    | 8.2  |
| <b>Feb-10</b>    | 208,713 | 195,277  | 13,436     | 6.4  | <b>Feb-10</b> | 12,092,207 | 11,085,459 | 1,006,748  | 8.3  |
| <b>Mar-09</b>    | 203,801 | 193,119  | 10,682     | 5.2  | <b>Mar-09</b> | 11,776,835 | 10,948,054 | 828,781    | 7.0  |

### Historical Unemployment Rates



### South Plains WDA Industry Composition 3rd Quarter 2009



### Total WDA Claims

|  | Mar-10 | Feb-10 | Mar-09 | OTY         |
|--|--------|--------|--------|-------------|
| <b>Initial</b>                                   | 2,069  | 1,217  | 2,651  | <b>-582</b> |
| <b>Continued</b>                                 | 7,056  | 5,961  | 6,992  | <b>64</b>   |
| <b>Continued Claims for the Week of the 12th</b> |        |        |        |             |
| <b>Continued</b>                                 | 1,937  | 2,224  | 2,042  | <b>-105</b> |

### Texas Unemployment Insurance Claims Filed

|  | Mar-10    | Feb-10    | Mar-09    | OTY             |
|--|-----------|-----------|-----------|-----------------|
| <b>Initial</b>                                   | 98,362    | 86,282    | 132,553   | <b>-34,191</b>  |
| <b>Continued</b>                                 | 1,088,926 | 1,020,691 | 1,242,793 | <b>-153,867</b> |
| <b>Continued Claims for the Week of the 12th</b> |           |           |           |                 |
| <b>Continued</b>                                 | 233,413   | 243,367   | 255,582   | <b>-22,169</b>  |

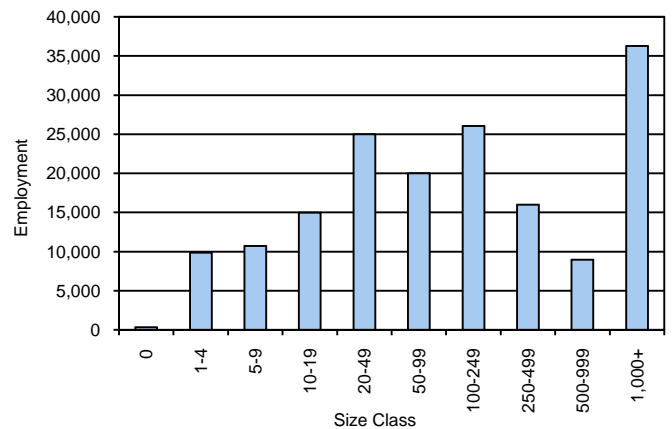
### South Plains WDA Average Weekly Wage

|                         | South Plains | WDA Qtr. Chg.       | Texas    |
|-------------------------|--------------|---------------------|----------|
| <b>3rd Quarter 2009</b> | \$628.88     | -\$5.73             | \$844.59 |
| <b>2nd Quarter 2009</b> | \$634.61     | <b>WDA OTY Chg.</b> | \$838.34 |
| <b>3rd Quarter 2008</b> | \$634.91     | -\$6.03             | \$849.50 |

### NAICS Covered Employment Quarterly Data 3rd Quarter 2009

| SUPER SECTOR                      | Employment     | Change    |               |
|-----------------------------------|----------------|-----------|---------------|
|                                   |                | Quarter   | Year          |
| Construction                      | 7,398          | -34       | -323          |
| Education & Health Services       | 22,998         | 1         | 661           |
| Federal                           | 1,673          | -55       | 17            |
| Financial Activities              | 8,344          | -72       | -335          |
| Information                       | 4,864          | -83       | -787          |
| Leisure & Hospitality             | 18,963         | -186      | -97           |
| Local                             | 23,296         | -75       | 1,424         |
| Manufacturing                     | 9,127          | -69       | -373          |
| Natural Resources & Mining        | 9,188          | 714       | -760          |
| Nonclassified                     | 88             | -7        | -18           |
| Other Services                    | 6,172          | 101       | 215           |
| Professional & Business Services  | 11,001         | 123       | -1,123        |
| State                             | 11,420         | -341      | -308          |
| Trade, Transportation & Utilities | 33,619         | -25       | -1,092        |
| <b>TOTAL</b>                      | <b>168,151</b> | <b>-8</b> | <b>-2,899</b> |

### Size Class Employment Composition 3rd Quarter 2009



\*Counties in WDA: Bailey, Cochran, Crosby, Dickens, Floyd, Garza, Hale, Hockley, King, Lamb, Lubbock, Lynn, Motley, Terry, & Yoakum