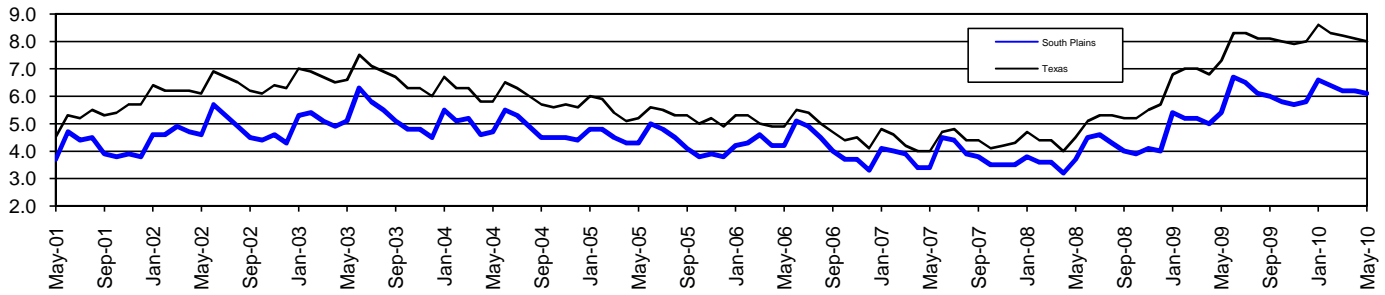


South Plains Workforce Development Area*

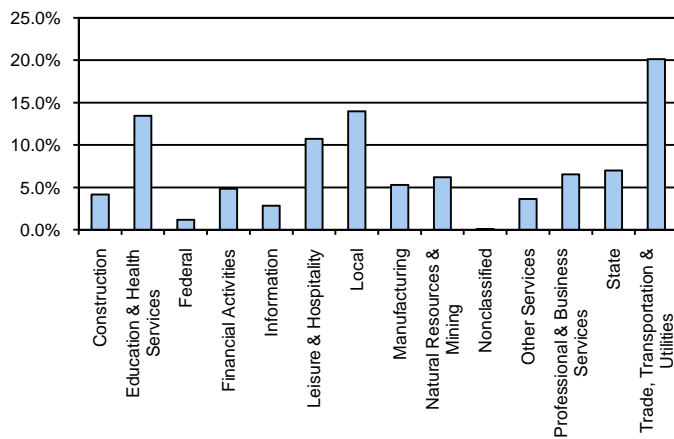
May 2010

| South Plains WDA | | | | | Texas | | | | |
|------------------|---------|----------|------------|------|--------|------------|------------|------------|------|
| | CLF | Employed | Unemployed | Rate | | CLF | Employed | Unemployed | Rate |
| May-10 | 210,109 | 197,339 | 12,770 | 6.1 | May-10 | 12,162,174 | 11,186,911 | 975,263 | 8.0 |
| Apr-10 | 211,869 | 198,775 | 13,094 | 6.2 | Apr-10 | 12,210,433 | 11,221,189 | 989,244 | 8.1 |
| May-09 | 206,306 | 195,177 | 11,129 | 5.4 | May-09 | 11,872,448 | 11,004,314 | 868,134 | 7.3 |

Historical Unemployment Rates



South Plains WDA Industry Composition 4th Quarter 2009



Total WDA Claims

| | May-10 | Apr-10 | May-09 | OTY |
|---|--------|--------|--------|--------|
| Initial | 1,258 | 1,000 | 1,781 | -523 |
| Continued | 4,975 | 5,050 | 6,566 | -1,591 |
| Continued Claims for the Week of the 12th | | | | |
| Continued | 1,640 | 1,814 | 2,353 | -713 |

Texas Unemployment Insurance Claims Filed

| | May-10 | Apr-10 | May-09 | OTY |
|---|-----------|---------|-----------|----------|
| Initial | 88,051 | 96,295 | 115,591 | -27,540 |
| Continued | 1,004,012 | 954,091 | 1,320,400 | -316,388 |
| Continued Claims for the Week of the 12th | | | | |
| Continued | 217,016 | 233,963 | 295,538 | -78,522 |

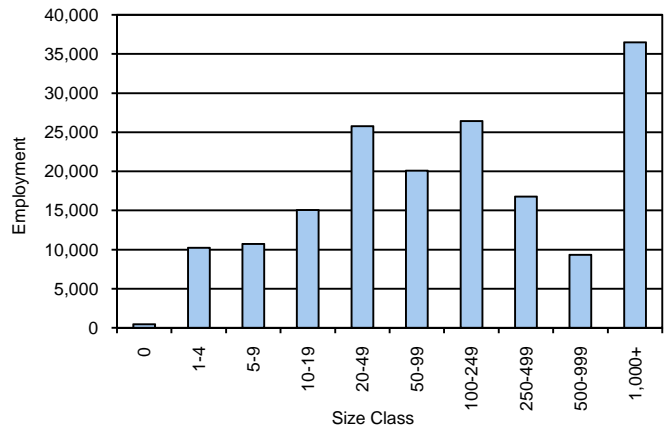
South Plains WDA Average Weekly Wage

| | South Plains | WDA Qtr. Chg. | Texas |
|------------------|--------------|---------------|----------|
| 4th Quarter 2009 | \$703.07 | \$72.41 | \$943.97 |
| 3rd Quarter 2009 | \$630.66 | WDA OTY Chg. | \$844.86 |
| 4th Quarter 2008 | \$694.81 | \$8.26 | \$932.81 |

NAICS Covered Employment Quarterly Data 4th Quarter 2009

| SUPER SECTOR | Employment | Change | |
|-----------------------------------|----------------|--------------|---------------|
| | | Quarter | Year |
| Construction | 7,146 | -257 | -413 |
| Education & Health Services | 23,043 | -71 | 416 |
| Federal | 1,978 | 305 | 177 |
| Financial Activities | 8,295 | -60 | -296 |
| Information | 4,869 | 27 | -682 |
| Leisure & Hospitality | 18,355 | -600 | -702 |
| Local | 23,909 | 1,108 | 1,183 |
| Manufacturing | 9,085 | -46 | -366 |
| Natural Resources & Mining | 10,619 | 1,419 | -533 |
| Nonclassified | 139 | 27 | 79 |
| Other Services | 6,177 | 7 | 241 |
| Professional & Business Services | 11,211 | 207 | -1,056 |
| State | 11,950 | 438 | 181 |
| Trade, Transportation & Utilities | 34,486 | 882 | -946 |
| TOTAL | 171,262 | 3,386 | -2,717 |

Size Class Employment Composition 4th Quarter 2009



*Counties in WDA: Bailey, Cochran, Crosby, Dickens, Floyd, Garza, Hale, Hockley, King, Lamb, Lubbock, Lynn, Motley, Terry, & Yoakum